

# MARANA REGIONAL AIRPORT NOISE ABATEMENT PROGRAM

information for residents

## VOLUNTARY NOISE ABATEMENT PROGRAM + COMMUNITY INFORMATION

Marana Regional Airport works closely with aircraft operators and community members to minimize noise impacts over residential areas in the Town of Marana. The Town has implemented a **Voluntary Noise Abatement Program (VNAP)** for the Marana Regional Airport which includes recommended noise abatement aircraft operating procedures and flight tracks. Noise abatement procedures are specific voluntary flight tracks for aircraft to fly to avoid overflight of populated areas. The goals of the Program are to minimize aircraft noise exposure to residential areas, maintain airport operations that are compatible with the surrounding communities and maintain continuing communications between the airport, airport users, and the surrounding community. Pilot's participation in the program is greatly appreciated.

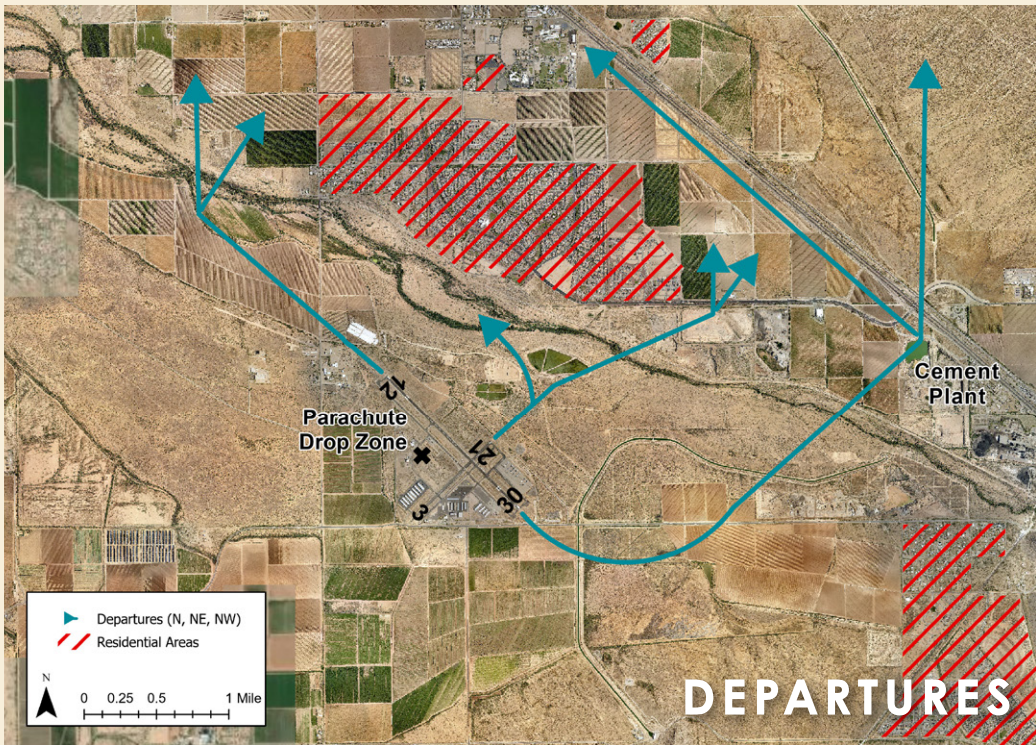
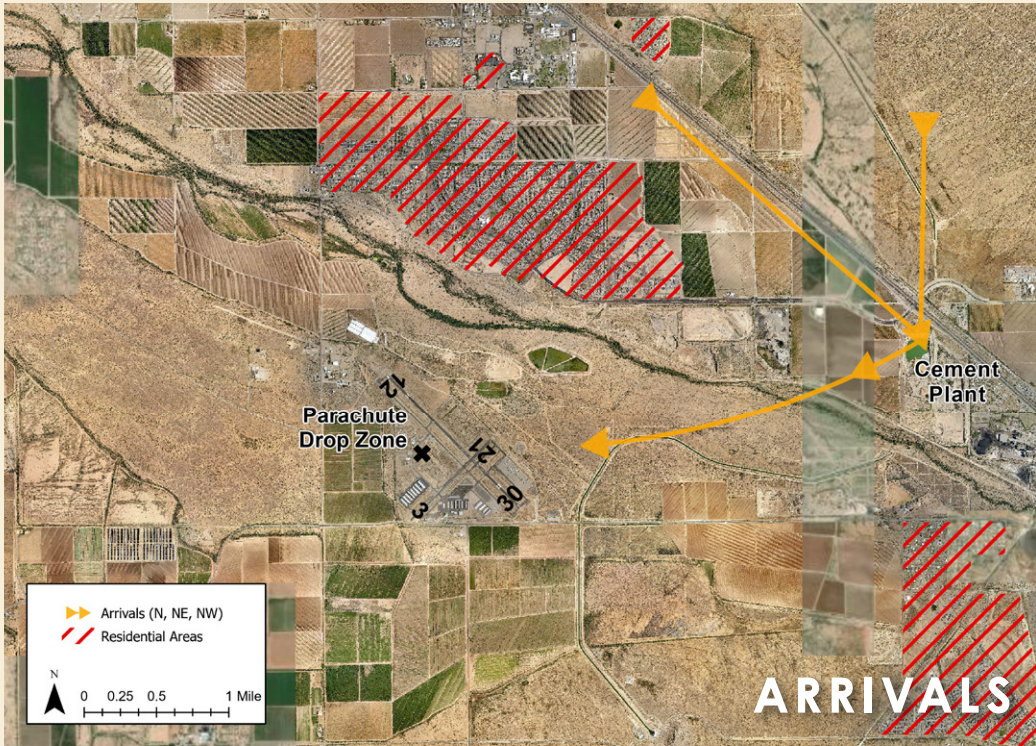
**Remember... safety ALWAYS takes precedence over noise abatement procedures.**



FOR DETAILS, VISIT:  
[maranaAZ.gov/airport](http://maranaAZ.gov/airport)







## PROGRAM OVERVIEW

**Noise** is broadly defined as any unwanted sound. **Abatement** is defined as a reduction. Aircraft noise abatement programs are developed to help reduce the impact of aircraft noise on the surrounding communities. Aviation noise abatement is a shared responsibility among every level of local government and every pilot.

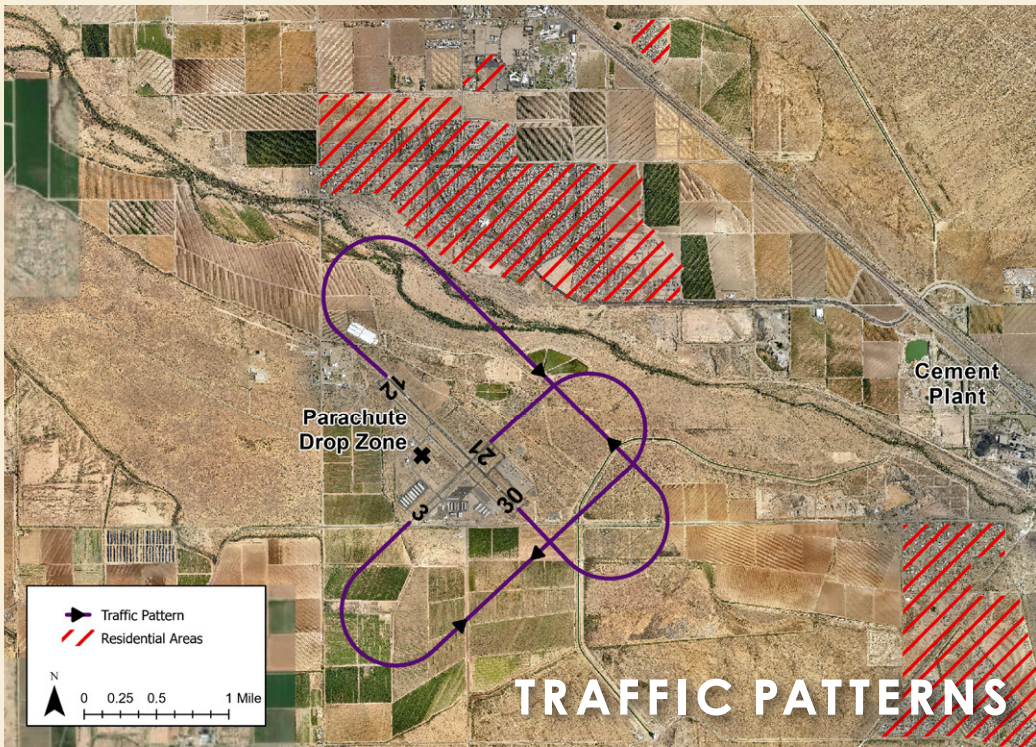
The Marana Regional Airport VNAP includes recommended **aircraft operating procedures** and **flight tracks**. The program is **completely voluntary** in nature and **no penalties can be imposed on aircraft operators for not following the noise abatement procedures or flight tracks**. However, most pilots want to be good neighbors and understand the value of the airport and community relations. Many of these pilots live in these same communities and are therefore usually more than willing to follow the procedures when it can be done without jeopardizing safety.

Additionally, Marana Regional Airport VNAP has published a **Pilot Pamphlet** as a noise abatement information guide for pilots. The pamphlet, similar to this pamphlet, is produced in a format that inserts into the pilots aeronautical charts or knee-board. It includes a map of the **noise abatement flight tracks** and **noise sensitive areas** on one side, and a list of the **noise abatement flight procedures** and **airport facilities** on the other side.

The noise abatement flight track map provides a depiction of the recommended **arrival, departure, and training flight patterns** for aircraft during visual flight rule (VFR) conditions. Noise sensitive areas, predominately populated areas and local community boundaries, are also shown on the map. **The map is for illustrative purposes only and actual flight paths of aircraft will vary**. During inclement weather aircraft follow prescribed Instrument Flight Rule (IFR) flight paths

*(Continued on next page)*





and altitudes and are under the control of Tucson TRACON (Terminal Radar Approach CONTROL).

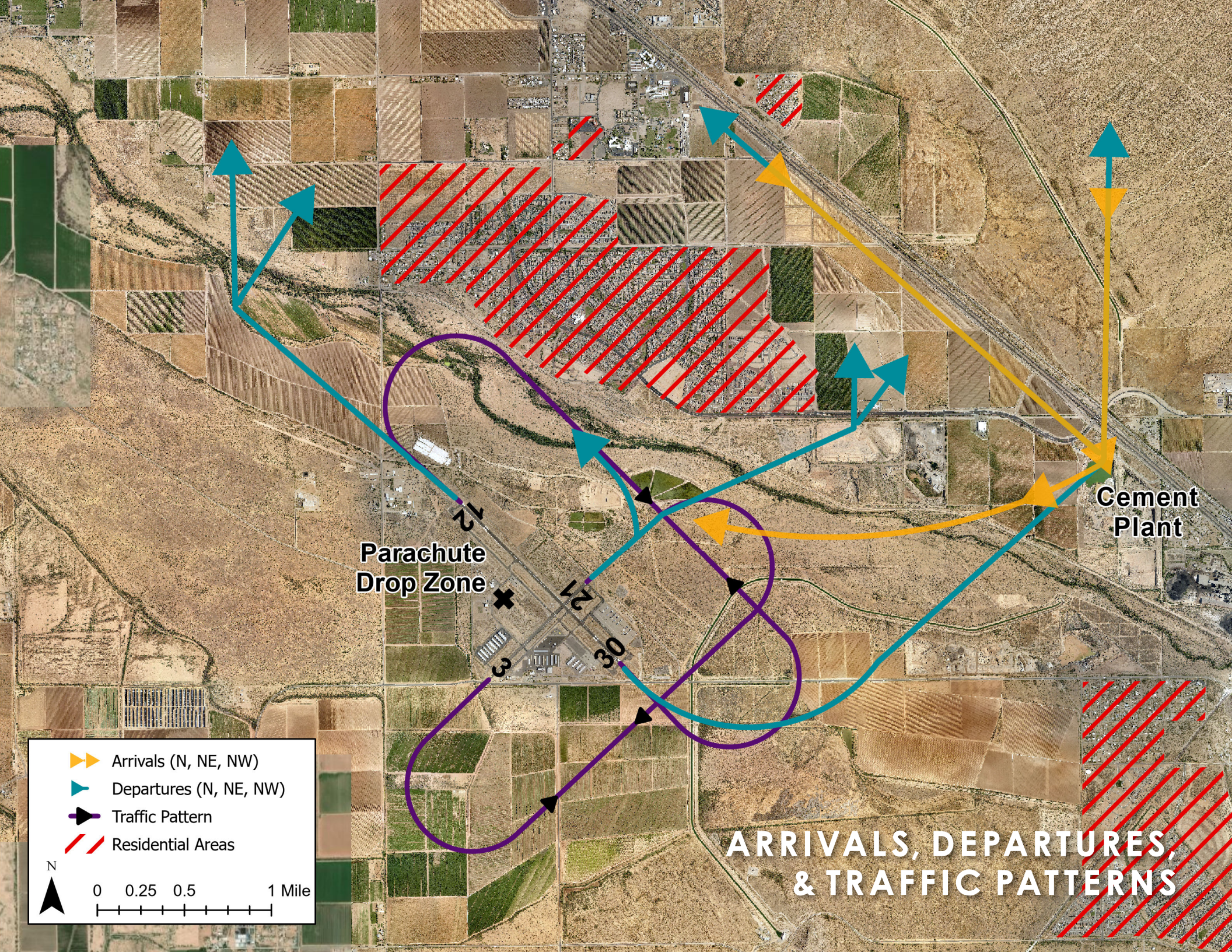
Aircraft arrive and depart **into the wind** for performance reasons. Thus, **wind direction determines runway usage**. For example, when the wind is out of the north or northwest, aircraft will fly arrival routes to the east and southeast of the airport and land to the northwest, utilizing Runway 30. When the winds are out of the southeast or south, aircraft will generally utilize Runway 12. When the winds are calm, **5 knots or less**, aircraft could utilize any runway; however, Runway 12 has been designated as the **preferential calm-wind runway** to minimize noise exposure and provide an efficient and safe flow of aircraft traffic. The airport also has a shorter crosswind runway, Runway 3/21, which is oriented to the southwest and northeast. (**Please note:** runway numbers are determined by the runway alignment in relation to magnetic north and rounded off to the nearest 10 degrees with the last digit omitted—e.g., Runway 30 is oriented to 300°).

Furthermore, the Marana Regional Airport is included in the **FAA National Plan of Integrated Airport Systems (NPIAS)**. As such, it is considered essential to the nation's air transportation system. Therefore, the Town **cannot restrict access by certain types of aircraft or impose mandated curfews**. However, the Town understands that nighttime or very early morning flights can be annoying and is asking aircraft operators to refrain from nighttime operations to the maximum extent practicable.

Thank you for your interest in the Marana Regional Airport VNAP and taking the time to review this information. **Your understanding of these items will contribute to the overall success of the program.**











Parachute Drop Zone

Cement Plant

# ARRIVALS, DEPARTURES, & TRAFFIC PATTERNS

-  Arrivals (N, NE, NW)
-  Departures (N, NE, NW)
-  Traffic Pattern
-  Residential Areas

N

0 0.25 0.5 1 Mile





**FOR DETAILS, VISIT:**  
[maranaAZ.gov/airport](http://maranaAZ.gov/airport)



**Marana Regional Airport (AVQ)**

11700 W Avra Valley Road,  
Marana, AZ 85653  
(520) 382-8052

**FAA Regional Aviation Noise Ombudsman**

(424) 405-7000

**FAA National Aviation Noise Ombudsman**

(202) 267-3521