

CARONDELET HEALTH NETWORK MICRO HOSPITAL - MARANA, AZ

5620 W CORTARO FARMS RD, MARANA, ARIZONA, 85742

DEVELOPMENT PLAN PACKAGE
DPP # DPP1801-001

CUP # CUP1712-002
ZONING # PCZ9505-002

OWNER

TENET HEALTHCARE
1400 SOUTH DOUGLASS ROAD, SUITE 250
ANAHEIM, CA 92806
V: 714.428.6769

CONTACT: RICHARD BECK

DEVELOPER

USPI
15305 DALLAS PARKWAY, SUITE 1600
ADDISON, TX 75001
V: 972.713.3500

CONTACT: DEANN MANCHESTER

OPERATOR

CARONDELET HEALTH NETWORK
1601 W. ST. MARY'S ROAD
TUCSO, AZ 85745
V: 520.872.3000

CONTACT: KYLE BENNION

ARCHITECT

ENVIRONMENTS FOR HEALTH
1250 E. COPELAND RD. STE. 500
ARLINGTON, TX 76011
V: 817.226.1917
F: 817.226.1919
CONTACT: JEREMY PEARCE
CONTACT: STUART COOK

STRUCTURAL

AG&E - STRUCTURAL ENGINEERING
15280 ADDISON ROAD, SUITE 310
ADDISON, TX 75001
V: 214.520.7202
F: 214.520.7204

CONTACT: CHET EMMETT, P.E.

MEP

SW ASSOCIATES
5429 LBJ FREEWAY, SUITE 300
DALLAS, TX 75240
V: 214.397.0211
F: 214.397.0886

CONTACT: MARK STRINGER

CIVIL

BECK CONSULTING ENGINEERS, INC.
2942 N. 24th STREET #114
PHOENIX, AZ 85016
V: 602.810.2975

CONTACT: JUSTING EVINGER, P.E.

DIETARY

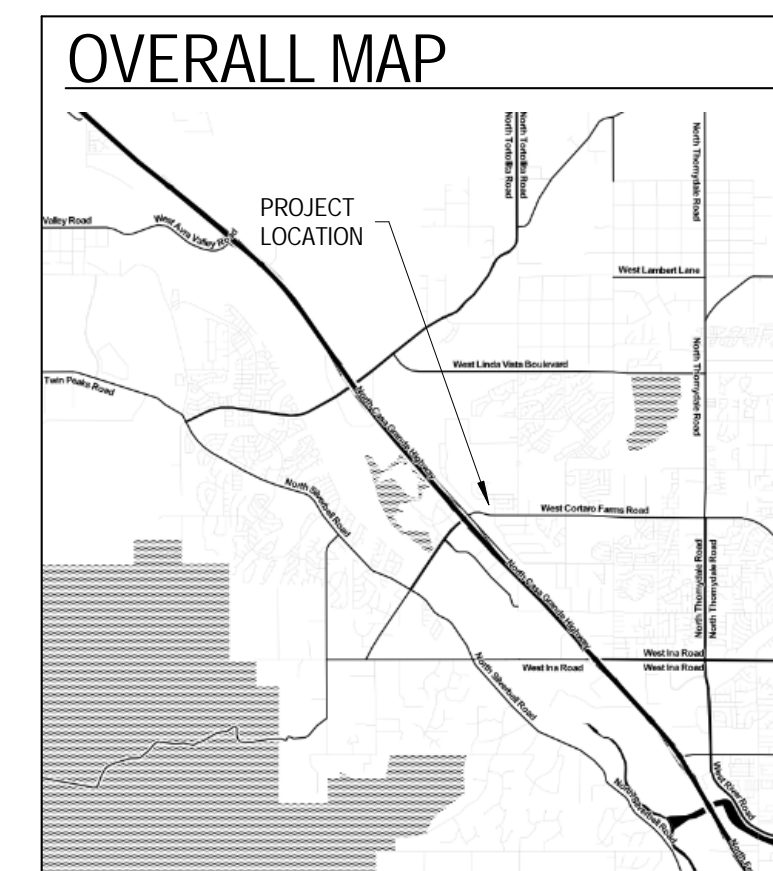
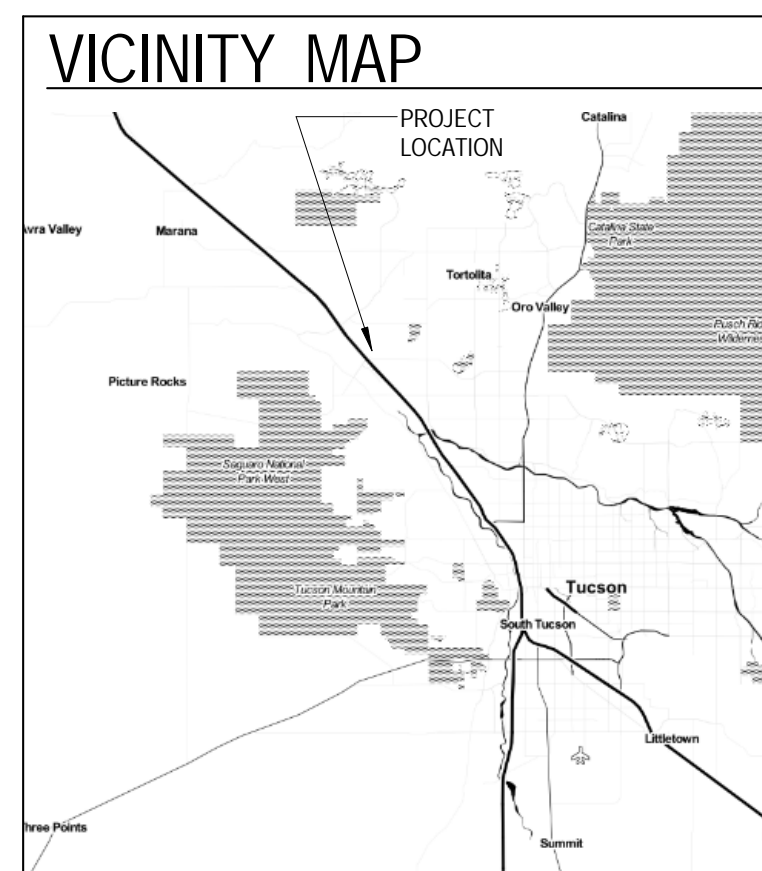
FIVE OAKS KITCHEN DESIGN
10206 FIVE OAKS LANE
MISSOURI CITY, TX 77459
V: 713.705.0952
F: 281.778.8536

CONTACT: ROBERT A. PURSELL

EQUIPMENT PLANNING

MAZZETTI+GBA
1893 GENERAL GEORGE PATTON DRIVE
FRANKLIN, TN 37067
V: 615.376.3100

CONTACT: TERRY ESQUIBELL



DPP DRAWING INDEX

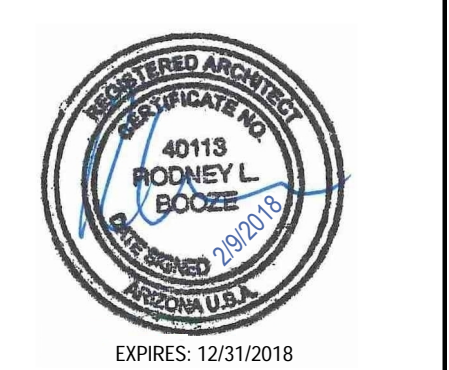
SHEET NUMBER	SHEET NAME	SHEET ISSUE DATE	REVISION		
			REVISION	ISSUE/ REVISION DATE	REVISION
12 ARCHITECTURAL					
A0	COVER	26 February 2018			
A1	ELEVATION KEY PLAN	26 February 2018			
A2	COLOR ELEVATIONS	26 February 2018			



DEVELOPMENT PLAN PACKAGE

CARONDELET HEALTH NETWORK
MICRO HOSPITAL - MARANA, AZ
5620 W CORTARO FARMS ROAD, MARANA, AZ 85742

REV	DESCRIPTION	DATE

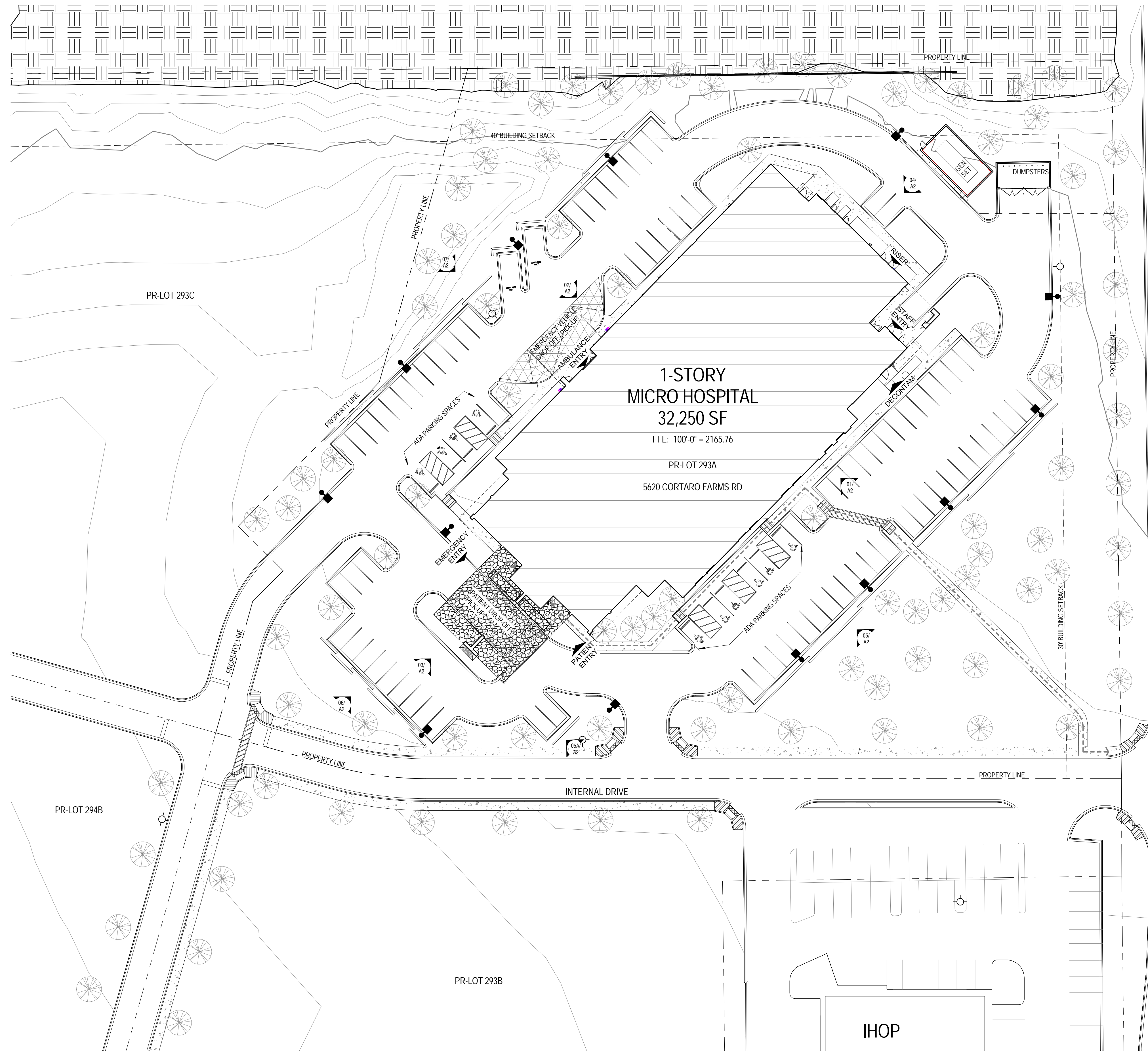


SEAL:
PROJECT NUMBER: 3017024b
DATE: 26 February 2018
SHEET TITLE AND NUMBER:

A0
COVER

DPP # DPP1801-001
CUP # CUP1712-002
ZONING # PCZ9505-002

2/26/2018 12:11:11 PM



1-STORY
MICRO HOSPITAL
32,250 SF

FFE: 100'-0" = 2165.76

PR-LOT 293A
5620 CORTARO FARMS RD

01 DPP ELEVATION SITE PLAN
A1 SCALE: 1" = 30'-0"

CERIUS STRAVENUE



DEVELOPMENT
PLAN
PACKAGE

CARONDELET HEALTH NETWORK
MICRO HOSPITAL - MARANA, AZ

5620 W CORTARO FARMS ROAD, MARANA, AZ 85742

REV	DESCRIPTION	DATE



SEAL:
PROJECT NUMBER: 3017024b
DATE: 26 February 2018
SHEET TITLE AND NUMBER:

A1

DPP1801-001
CUP1712-002
PCZ9505-002

ELEVATION KEY PLAN

EXTERIOR MATERIAL GENERAL NOTES

- CONTROL JOINTS ARE TO BE PROVIDED CONSISTENT WITH BUILDING ELEVATIONS. MAXIMUM PORTLAND CEMENT STUCCO PANEL SIZE SHALL NOT EXCEED 144 SQ. FT. FROM CONTROL JOINT TO CONTROL JOINT(S) AT ANY EXTERIOR LOCATION. PROVIDE VERTICAL PROPRIETARY REVEAL AT THE CORNER OF A CHANGE IN PORTLAND CEMENT STUCCO COLOR. REF. ELEV.
- MASONRY EXPANSION AND CONTROL JOINTS ARE TO BE PROVIDED PER MANUFACTURER AND TRADE INDUSTRY STANDARDS
- MATCH MORTAR COLOR
- DO NOT SCALE DRAWINGS. IF DIMENSIONS ARE IN QUESTION, THE CONTRACTOR SHALL BE RESPONSIBLE FOR OBTAINING CLARIFICATIONS FROM THE ARCHITECT
- IDENTIFIED DIMENSIONS ARE TO ROUGH OPENINGS. GC TO FIELD VERIFY ALL OPENINGS AND ADJUST FRAMING DIMENSIONS TO ACCOMMODATE NOTED JOINT WIDTHS
- REFERENCE SPECIFICATIONS FOR EXTERIOR MATERIAL FINISH AND COLORS

EXTERIOR MATERIAL COLOR LEGEND

- ADHERED MANUFACTURED STONE MASONRY VENEER (THIN STONE)
STN-1 - ELDORADO STONE - MOUNTAIN LEDGESTONE - SHASTA
- ALUMINUM COMPOSITE PANEL SYSTEM
ACM-1 - CLEAR ANODIZED
- MODIFIED CEMENT PLASTER SYSTEM
MCP-1 - DRYVIT #389 "SOUTHERN TAN"
- MODIFIED CEMENT PLASTER SYSTEM
MCP-2 - DRYVIT #426A "GOLDEN HARVEST"
- MODIFIED CEMENT PLASTER SYSTEM
MCP-3 - DRYVIT #374B "FUDGE"

NOTE: ALL ROOFTOP EQUIPMENT WILL BE SCREENED BY PARAPETS AND SCREEN WALLS

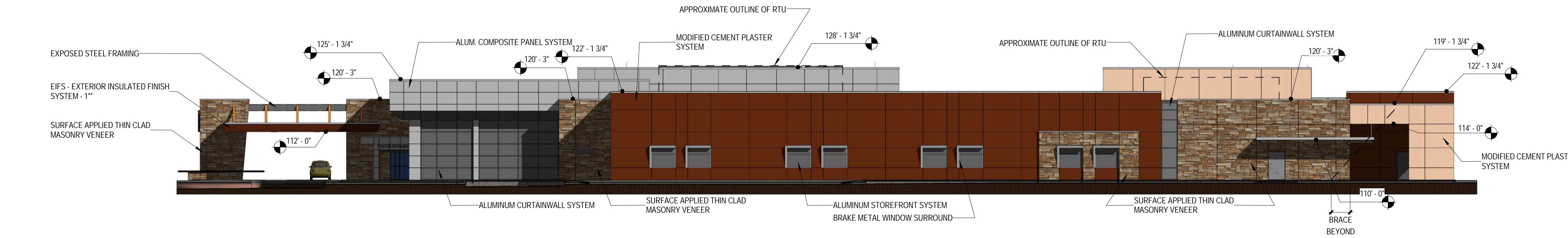
REV	DESCRIPTION	DATE



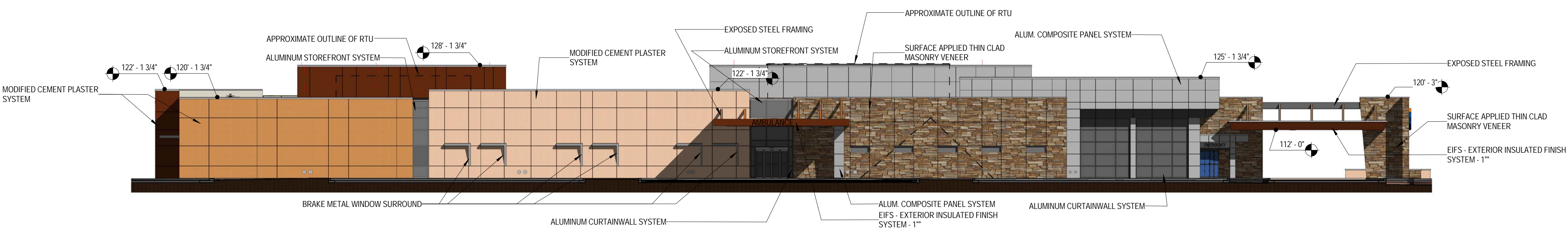
SEAL:
 PROJECT NUMBER: 3017024b
 DATE: 26 February 2018
 SHEET TITLE AND NUMBER:

A2

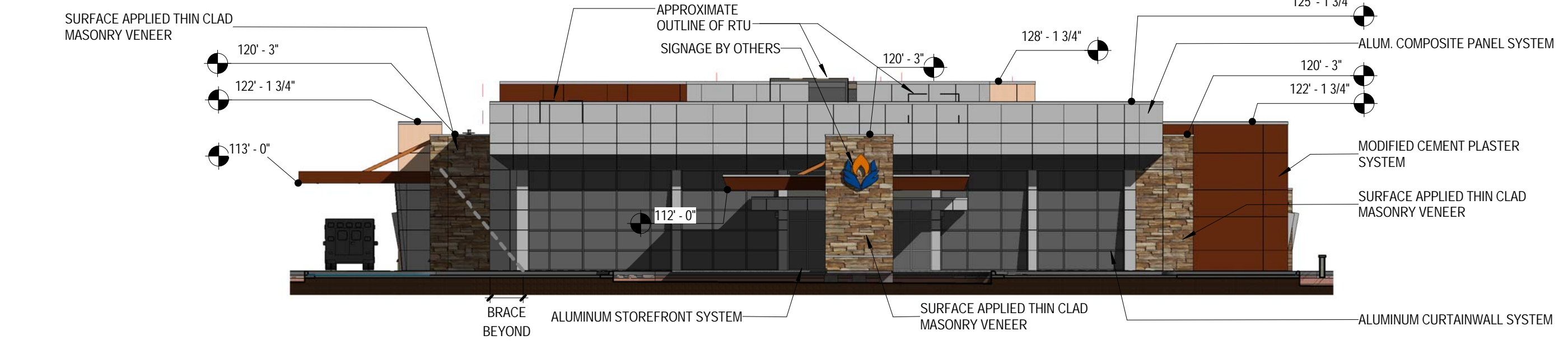
COLOR ELEVATIONS



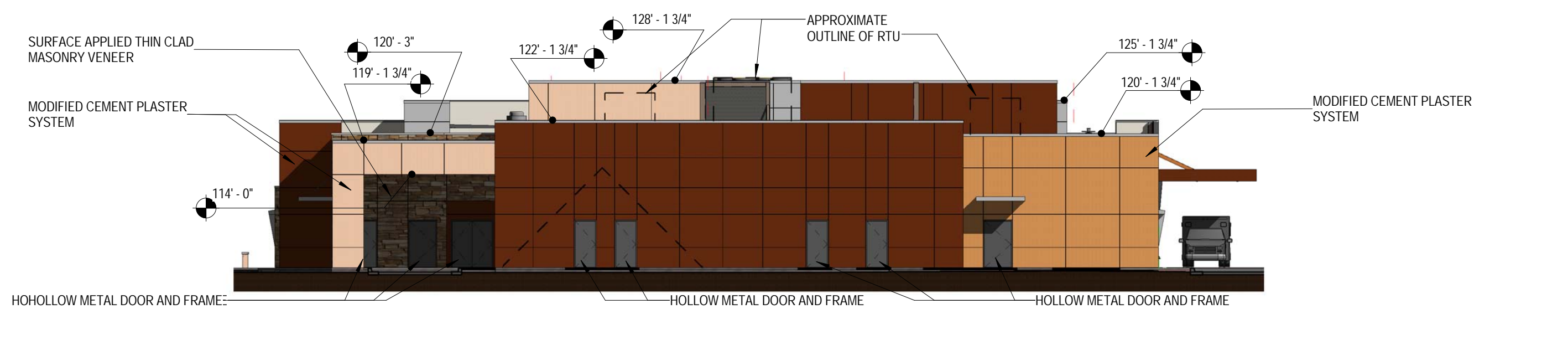
01 EXTERIOR ELEVATION - OVERALL SOUTHEAST
A2 SCALE: 1/16" = 1'-0"



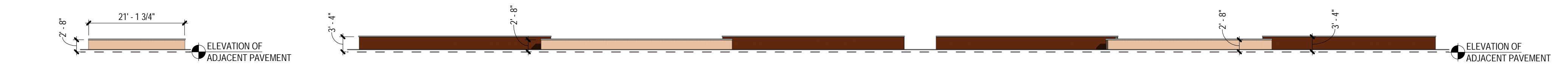
02 EXTERIOR ELEVATION - OVERALL NORTHWEST
A2 SCALE: 1/16" = 1'-0"



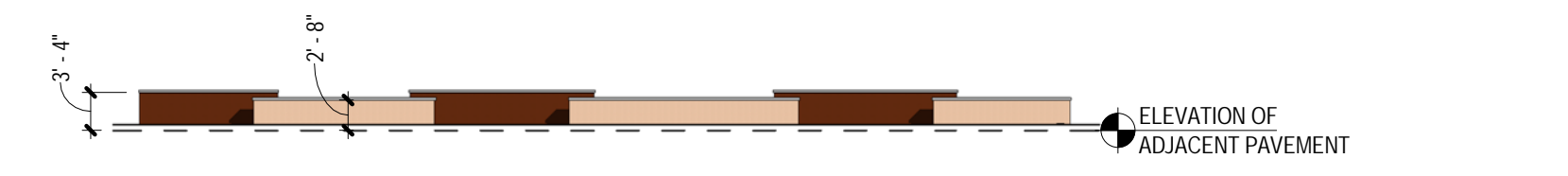
03 EXTERIOR ELEVATION - OVERALL SOUTHWEST
A2 SCALE: 1/16" = 1'-0"



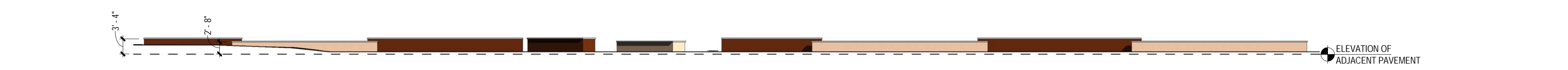
04 EXTERIOR ELEVATION - OVERALL NORTHEAST
A2 SCALE: 1/16" = 1'-0"



05 SITE WALLS - SOUTHEAST
A2 SCALE: 1/16" = 1'-0"



06 SITE WALLS - SOUTHWEST
A2 SCALE: 1/16" = 1'-0"



07 SITE WALLS - NORTHWEST
A2 SCALE: 1/16" = 1'-0"